

1 μ m
┆

Mag = 8.00 K X

EHT = 4.00 kV

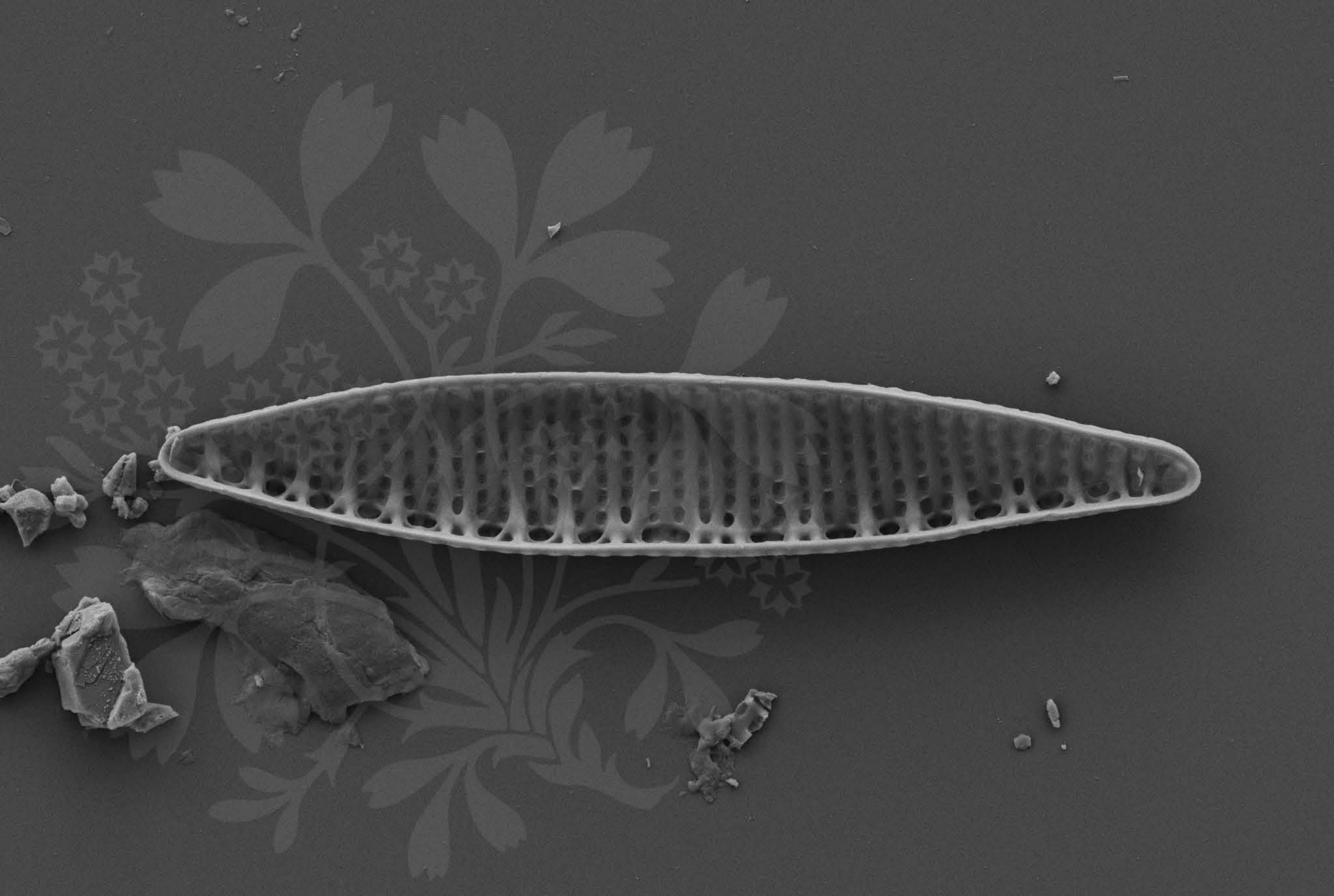
Signal A = SE2

Date :14 Feb 2017

WD = 4.4 mm

File Name = barcode0722_01.tif





1 μ m
┆

Mag = 8.00 K X

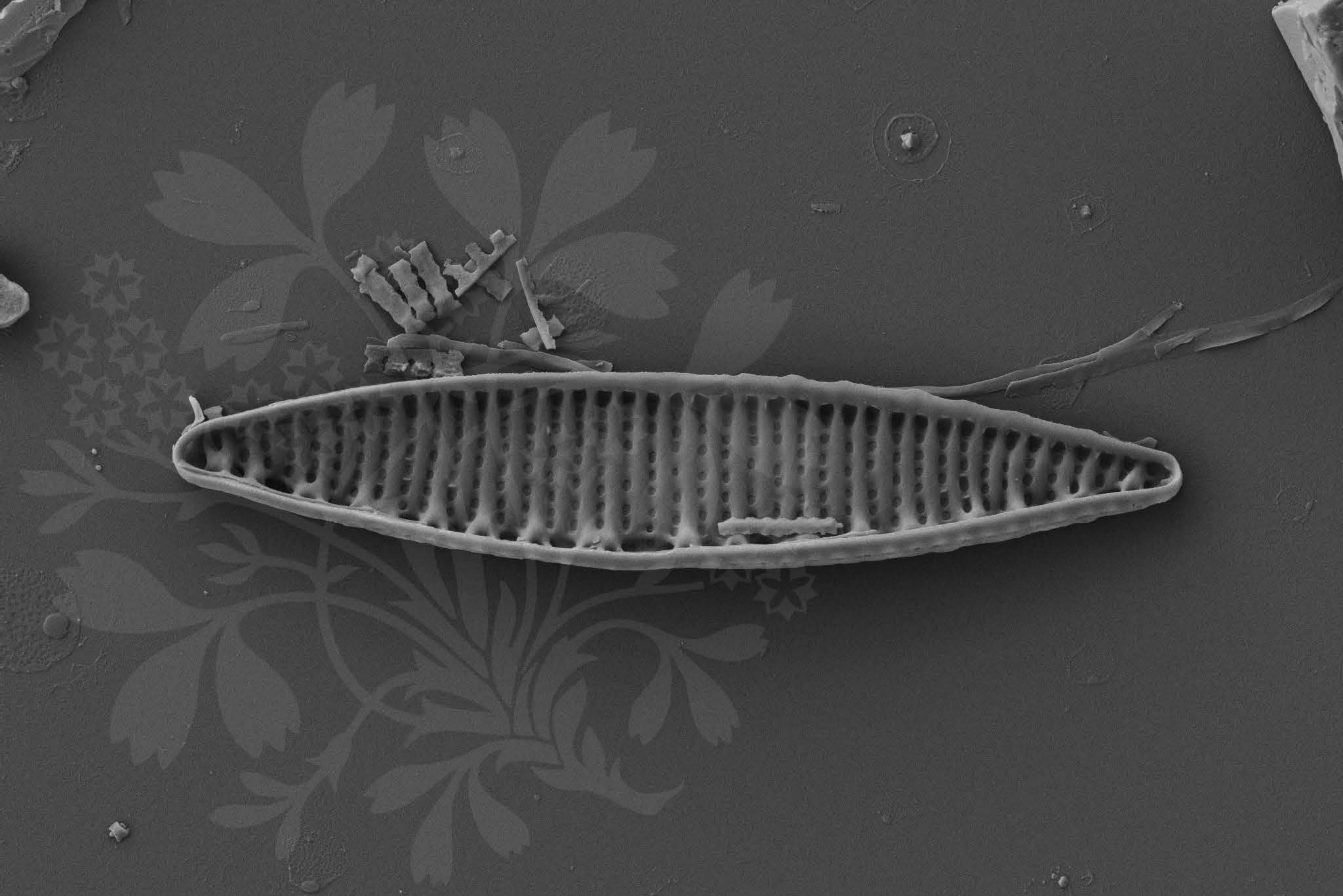
EHT = 4.00 kV

Signal A = SE2 Date :14 Feb 2017

WD = 4.4 mm

File Name = barcode0722_02.tif





1 μ m
┌───┐

Mag = 8.00 K X

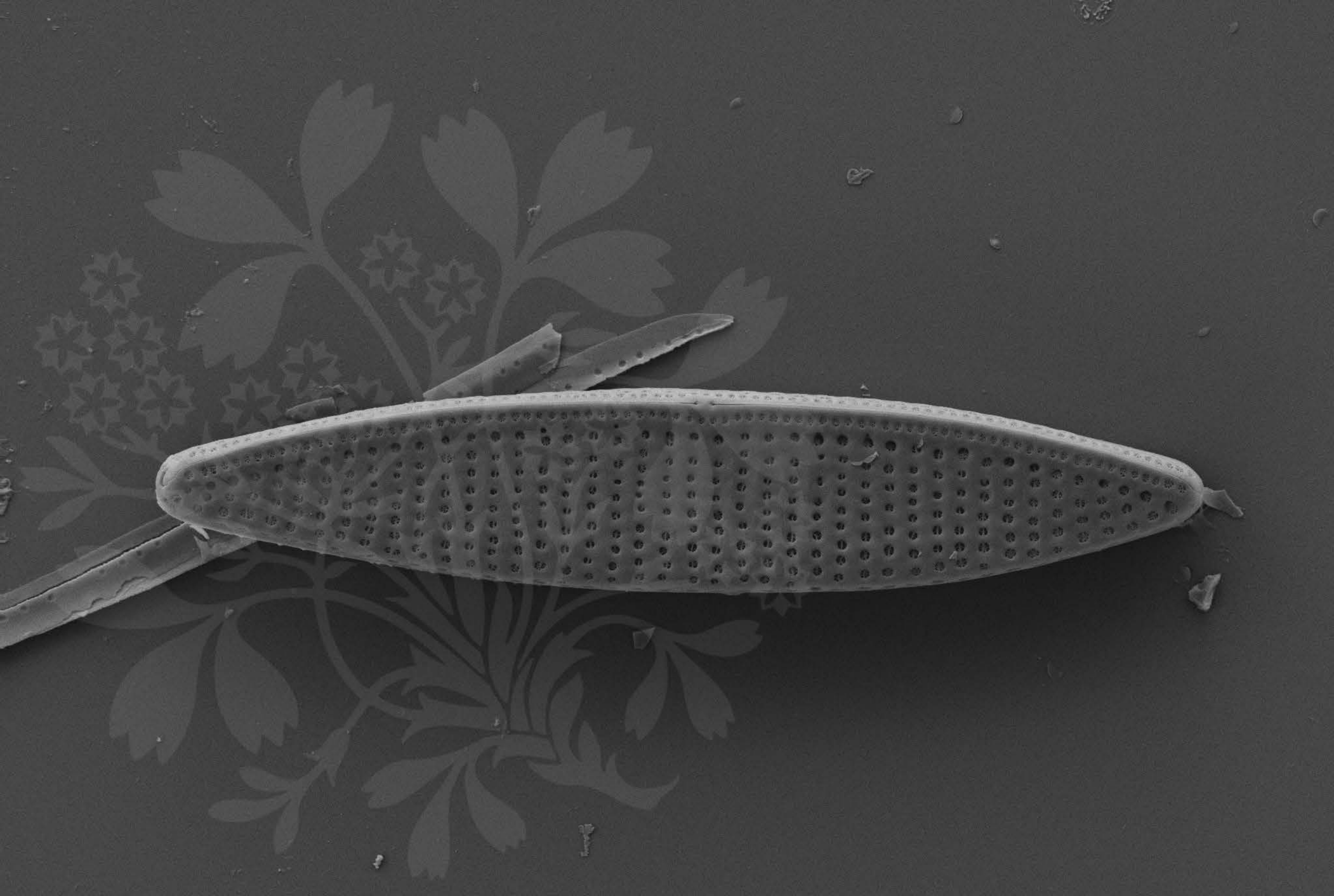
EHT = 4.00 kV

Signal A = SE2 Date :14 Feb 2017

WD = 4.4 mm

File Name = barcode0722_03.tif





1 μ m
┌
└

Mag = 8.00 K X

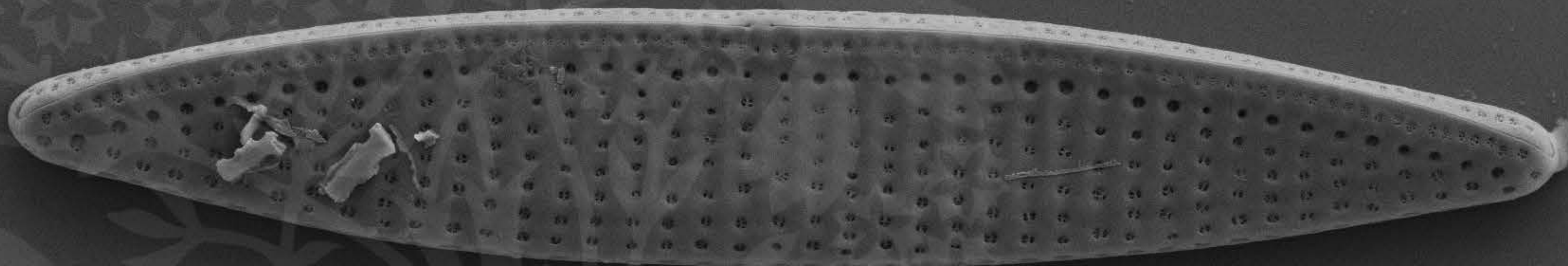
EHT = 4.00 kV

Signal A = SE2 Date :14 Feb 2017

WD = 4.4 mm

File Name = barcode0722_04.tif





1 μ m
┌───┐

Mag = 8.00 K X

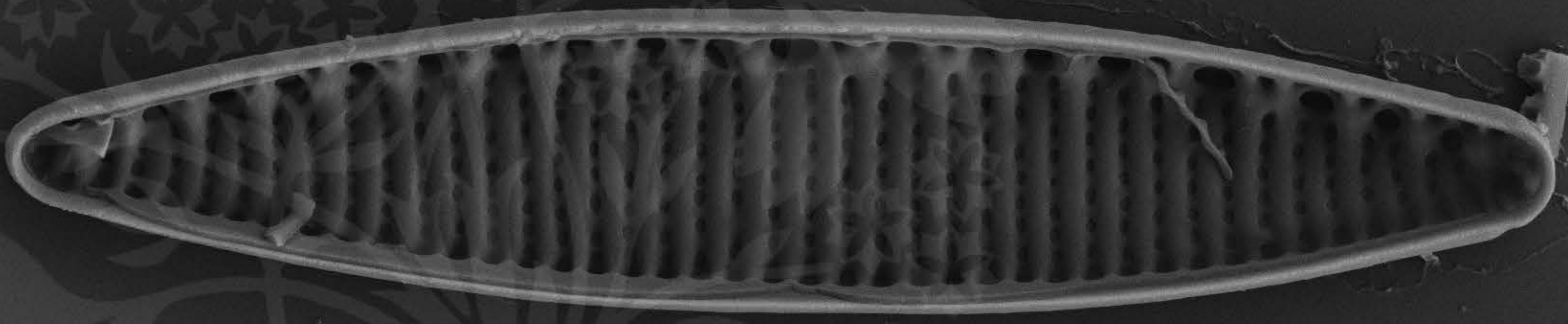
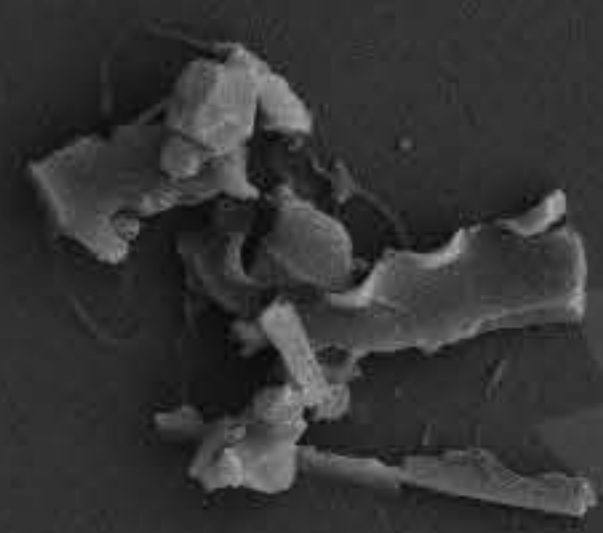
EHT = 4.00 kV

Signal A = SE2 Date :14 Feb 2017

WD = 4.4 mm

File Name = barcode0722_05.tif





1 μ m
┌───┐

Mag = 8.00 K X

EHT = 4.00 kV

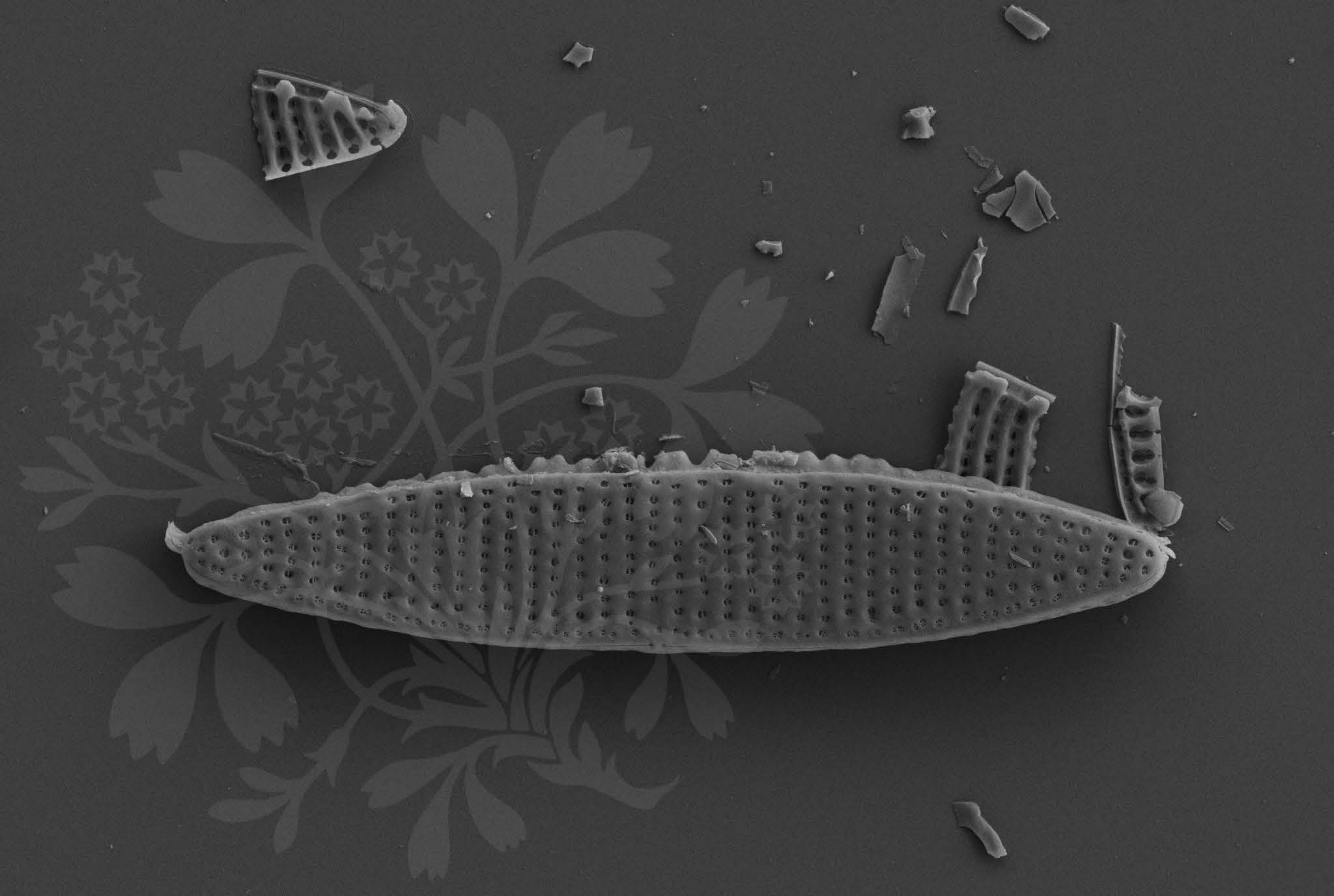
Signal A = SE2

Date :14 Feb 2017

WD = 4.3 mm

File Name = barcode0722_06.tif





1 μm
┌───┐

Mag = 8.00 K X

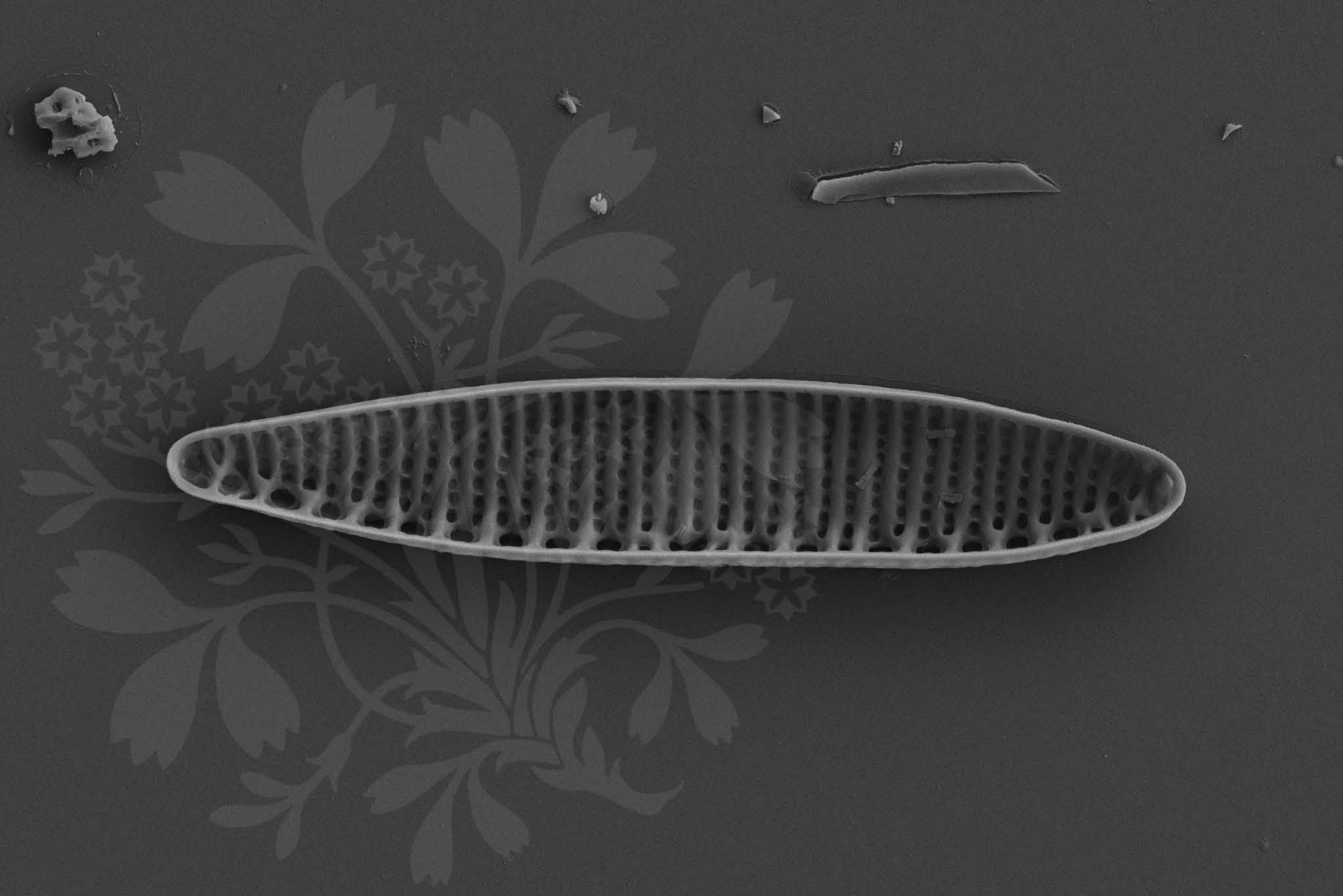
EHT = 4.00 kV

Signal A = SE2 Date :14 Feb 2017

WD = 4.3 mm

File Name = barcode0722_07.tif





1 μ m
┌───┐

Mag = 8.00 K X

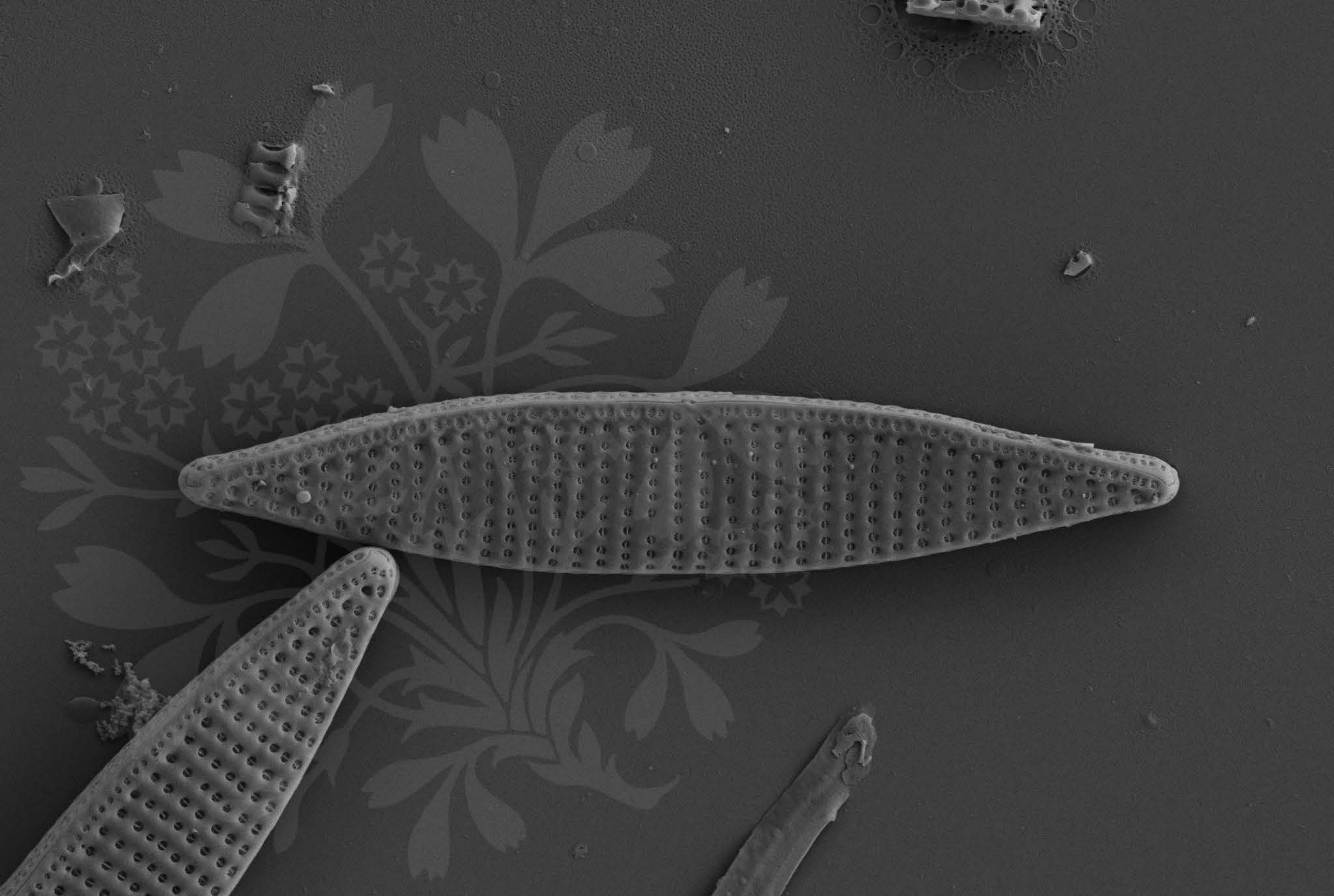
EHT = 4.00 kV

Signal A = SE2 Date :14 Feb 2017

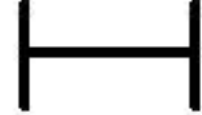
WD = 4.3 mm

File Name = barcode0722_08.tif





1 μ m



Mag = 8.00 K X

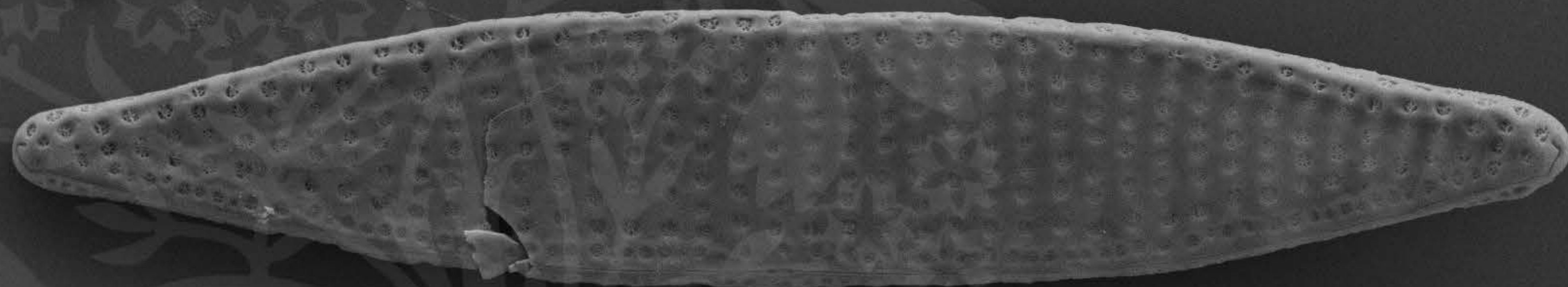
EHT = 4.00 kV

Signal A = SE2 Date :14 Feb 2017

WD = 4.3 mm

File Name = barcode0722_09.tif





1 μm
┌───┐

Mag = 8.00 K X

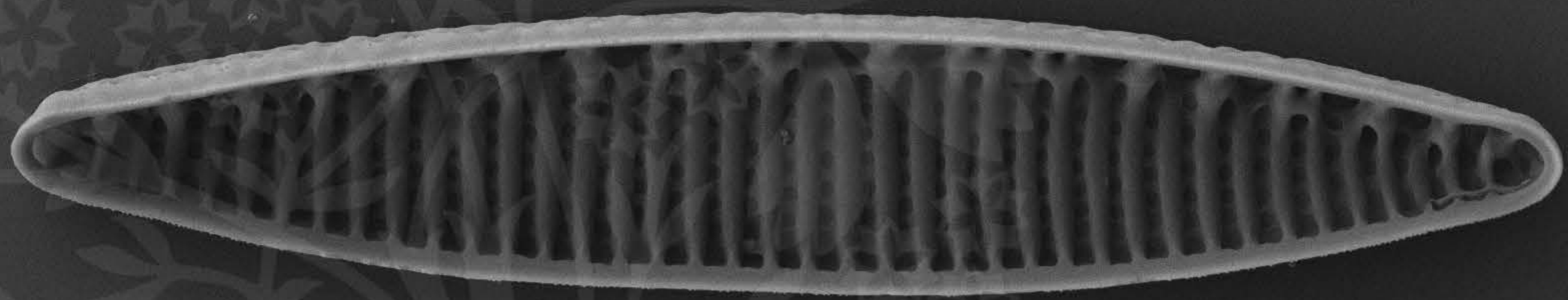
EHT = 4.00 kV

Signal A = SE2 Date :14 Feb 2017

WD = 4.4 mm

File Name = barcode0722_10.tif





1 μ m
┌───┐

Mag = 8.00 K X

EHT = 4.00 kV

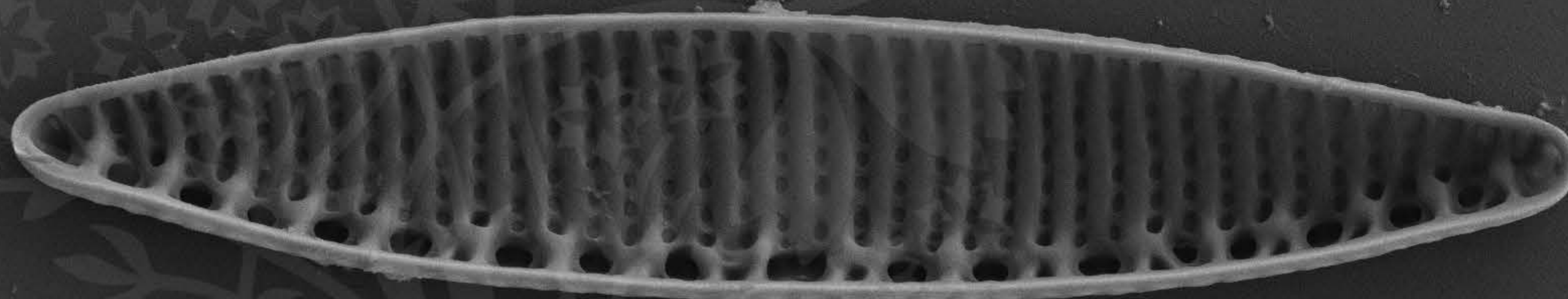
Signal A = SE2

Date :14 Feb 2017

WD = 4.4 mm

File Name = barcode0722_11.tif





1 μ m
┌───┐

Mag = 8.00 K X

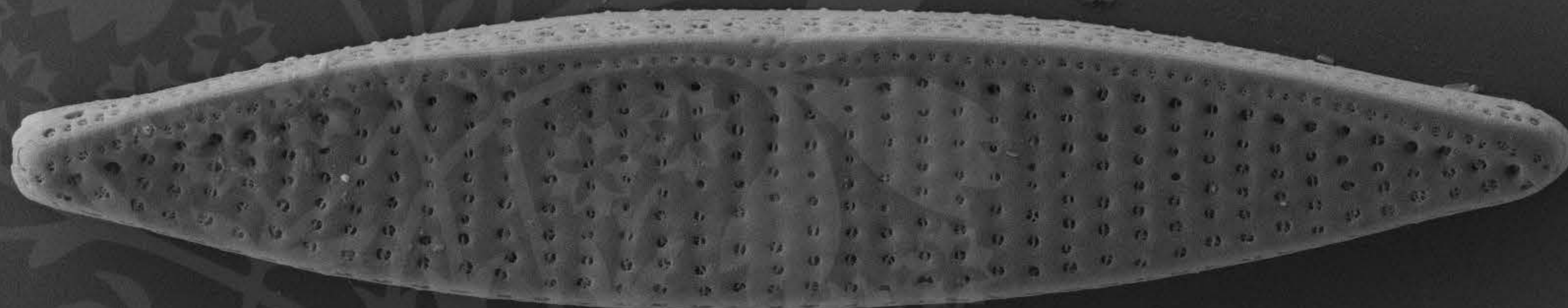
EHT = 4.00 kV

Signal A = SE2 Date :14 Feb 2017

WD = 4.3 mm

File Name = barcode0722_12.tif





1 μ m
┌───┐

Mag = 8.00 K X

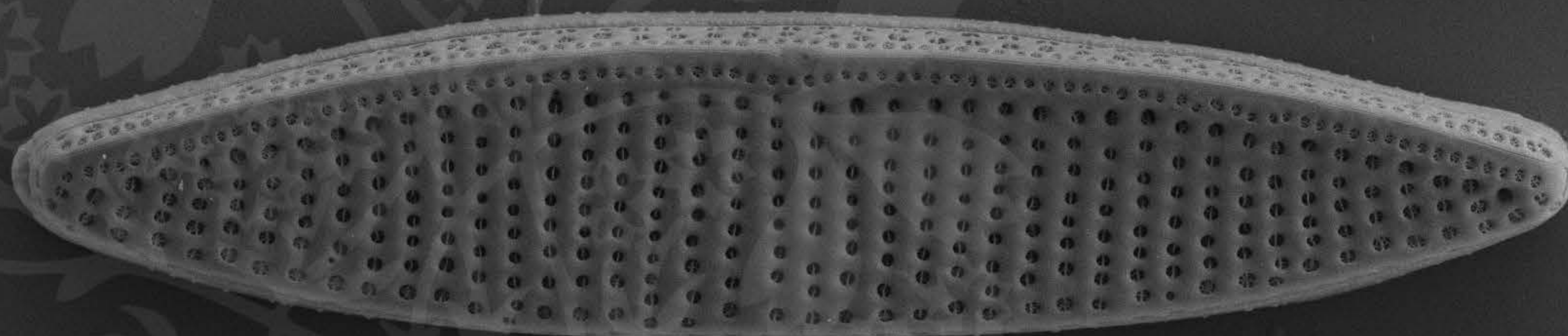
EHT = 4.00 kV

Signal A = SE2 Date :14 Feb 2017

WD = 4.3 mm

File Name = barcode0722_13.tif





1 μ m
┌
└

Mag = 8.00 K X

EHT = 4.00 kV

Signal A = SE2 Date :14 Feb 2017

WD = 4.3 mm

File Name = barcode0722_14.tif

